

FOREST

TEMPORARY FLOOR PROTECTION FOR CONSTRUCTION SITES

■ **DOWNGRADED (2nd CHOICE) - LOW COST**



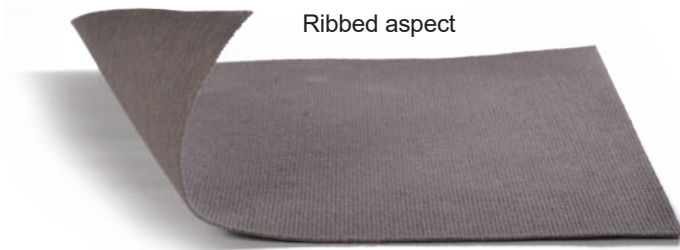
**SHOCK
ABSORPTION**



**LOW COST
SOLUTION**



**EASY
TO CUT**



Ribbed aspect

Example FOREST
Products can be different



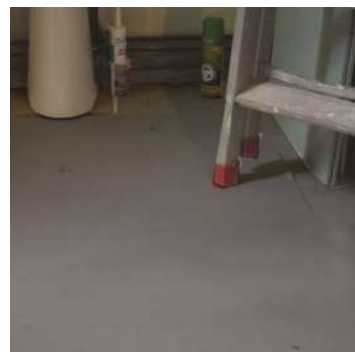
Flat aspect
with protective film



Velour aspect
without protective film

NO CHOICE POSSIBLE: random colors, non-standard lengths, flat, ribbed or velour aspect, with or without protective film (depending on available stocks).

- **FLOORS PROTECTION** by cushioning **THE IMPACT** caused by falling objects
- **ABSORPTION** of **SURROUNDING DUST**



TECHNICAL DATA

According to stocks

Surface: flat, ribbed or velour needlepunched protective textile

Fibres: 100% synthetic

Backing: impregnated, precoat or latex

Total weight: mini 210 g/m² ± 10%

Installation: with double-sided adhesive



* Information on emission of volatile substances in an interior, which represent a risk of inhalation on a scale starting from A+ (almost no emission) to C (high emission)

REFERENCES

Width		Sommer Codes	EAN Codes
1,5 m	} Variable length according to stocks	FOREST	3700379027192
2 m		FOREST	370037 9016851
3 m		FOREST	370037 9018121
4 m		FOREST	370037 9016868



A Sommer Needlepunch brand

Sommer Needlepunch
341, rue de la Mairie
59780 Baisieux - France
www.sommernp.com

Tel : +33 (0)3 20 64 46 46
Fax : +33 (0)3 20 64 46 24
E-mail : commandes@sommernp.com

